

— Ghost Town Trail  
 — Military base

# EXPLORE and PROTECT SAZAN island

*The Sazan island, part of Karaburun-Sazan national marine park, is the largest island in Albania with an area of 5.7 km<sup>2</sup>. The best-known period of the island is after the 50s when it took the form of a real city with residential buildings, schools, cinemas, hospitals etc.. Other than history the island represents an area of great biodiversity importance regarding both marine and terrestrial environment.*





*Dalmation algyroides*  
(*Algyroides nigropunctatus*)

### FLORA

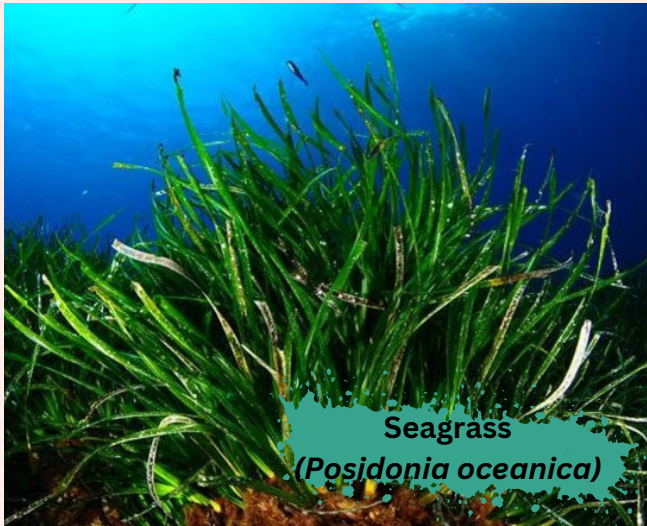
Sazani island has a great diversity of natural habitats, creating a vegetation mosaic of pinewoods and oaks, Mediterranean scrub, grassy open areas, stony slopes. Around 300 plant types, around 8-12% of the Albanian flora, can be found on the island including species that are present only and exclusively on Sazani such as sea lavender and wild cabbage.

### HERPETOFAUNA

On the island can be found 7 species of amphibians of which 3 rare and 15 species of reptiles of which 13 are rare.. Characteristic is the population of dalmatian algyroides, which is very abundant compared to the mainland.



*Kuhls pistrelle*  
(*Pipistrellus kuhlii*)



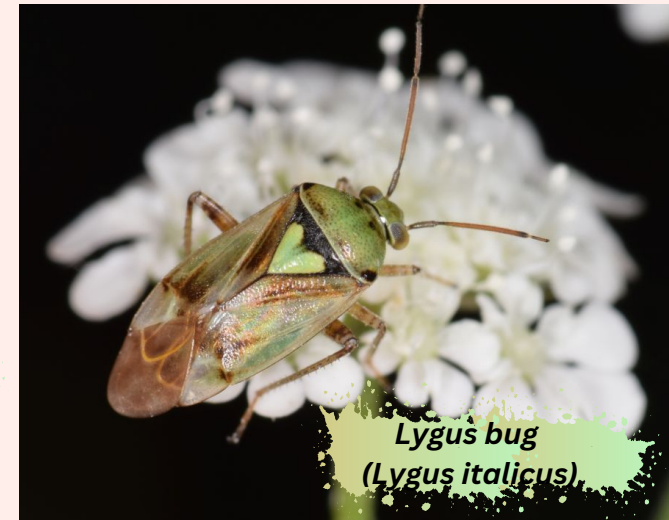
Seagrass  
(*Posidonia oceanica*)

### AVIFAUNA

Around 40 bird species have been recorded and the island can be considered as a national hot spot for species such as Red-rumped Swallow and Eagle Owl, which is missing on the Albanian coast. The coastal rocky habitats support breeding populations of Kestrel, Rock Dove, Crag Martin etc..

### ENTOMOFAUNA

Ten new species for Albania have been found in the island in 2015 and the comparison with the Karaburun Peninsula highlights the originality of Sazani invertebrate populations, as well as on the majority of small islands.



*Lygus bug*  
(*Lygus italicus*)



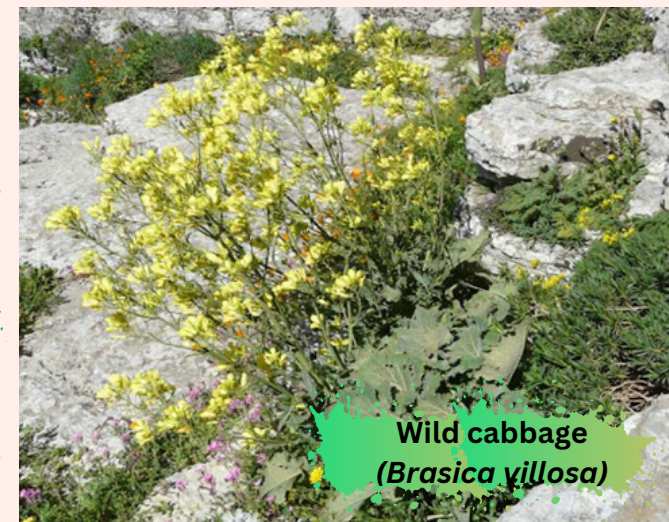
Eagle owl  
(*Bubo bubo*)

### MAMMALS

Fourteen species of mammals have been recorded on the island, from which 9 are native to Sazani Island and 5 of them are introduced. Eight of the nine native species are bats and the most abundant is Kuhl's pipistrelle.

### MARINE ENVIRONMENT

An important aspect of the island is also the marine biodiversity represented by species such as seagrass, which form a major habitat for fish reproduction, produce oxygen and sequester carbon, brown algae or coralline red algae for example.



Wild cabbage  
(*Brasica villosa*)